



“285 million records
were compromised
in 2008.”

Verizon RISK Team
2009 Data Breach
Investigations Report

Websense Data Discover

Confidential data owned by a business provides a competitive advantage. But when a business doesn't have a clear notion of what data it has and where it is stored, the business is at risk. Consider the impact if confidential data were stored in unsecured or unauthorised locations and in violation of corporate and regulatory compliance. What if an auditor found unencrypted credit card numbers stored on an open file share, or if customer data or intellectual property was stored on a mail server, an intranet site, or in unauthorised databases?

Users and applications create data, store it on desktops, file servers and databases, and transfer it over the Web, in email, or to removable storage devices. Finding this data and preventing its unauthorised access is critical to mitigating the risk of data loss.

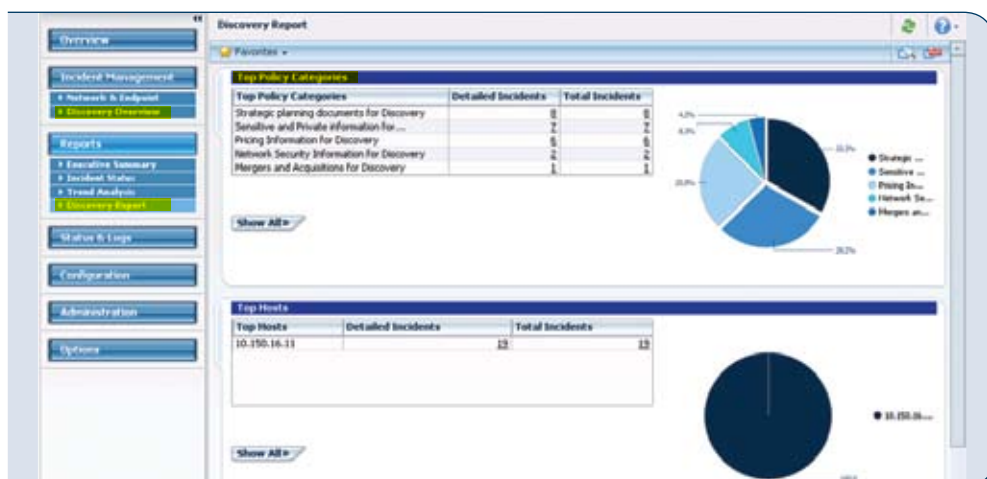
How It Works

Websense® Data Discover is an agent-less, software-based solution that remotely scans specified network file shares, databases, email servers, data repositories, and desktops to discover and classify confidential data on these systems. It goes further to automatically enforce data protection policies on these systems by applying actions

including encryption, file removal, file replacement, notification, auditing and logging of policy violations, and more. Websense Data Discover incident management provides a wealth of detail on the discovered data, including a link to the specific file, its classification, the file owner, and any remediation action that has already been enforced to secure the data.

Websense Data Discover offers:

- **Discovery and classification of confidential data** stored on the network in known locations by scanning specified IP address ranges where confidential data is known to reside
- **Automated remediation of unsecured** confidential data on data repositories
- **Operational efficiency with minimal impact on server performance**, using off-peak scheduling of scans
- **Accurate identification of confidential data with** a comprehensive set of technologies, using policy templates for regulated data and fingerprinting of known confidential data
- **Extensible and powerful policy framework** providing visibility and control over all confidential data



Discovery report for top policy categories

Technical Specifications:

See Users Guide for more details

DSS Server (management component)

System Resources

Two 2.4 GHz Intel or AMD Processors or better
4 GB RAM

Four 74 GB, 15K RPM, SCSI U320 hard drives
(minimum) in RAID 1+0
NIC 1000/100/10

Software Resources

Windows 2003 Server standard R2 edition,
latest Service Pack

Part Numbers and Description

SKU: WDD-X-XXXX-X

Descriptions: Websense Data Discover
Options: # seats, support, printer agent,
content gateway, subscription duration,
new/renew/additional seats.

Websense, Inc.

San Diego, CA USA
tel 800 723 1166
tel 858 320 8000
www.websense.com

Websense UK Ltd.

Reading, Berkshire UK
tel 0118 938 8600
fax 0118 938 86981
www.websense.co.uk

Australia
websense.com.au

Italy
websense.it

Brazil
websense.com/brasil

Japan
websense.jp

Colombia
websense.com/latam

Malaysia
websense.com

France
websense.fr

Mexico
websense.com/latam

Germany
websense.de

PRC
prc.websense.com

Hong Kong
websense.cn

Singapore
websense.com

India
websense.com

Spain
websense.com.es

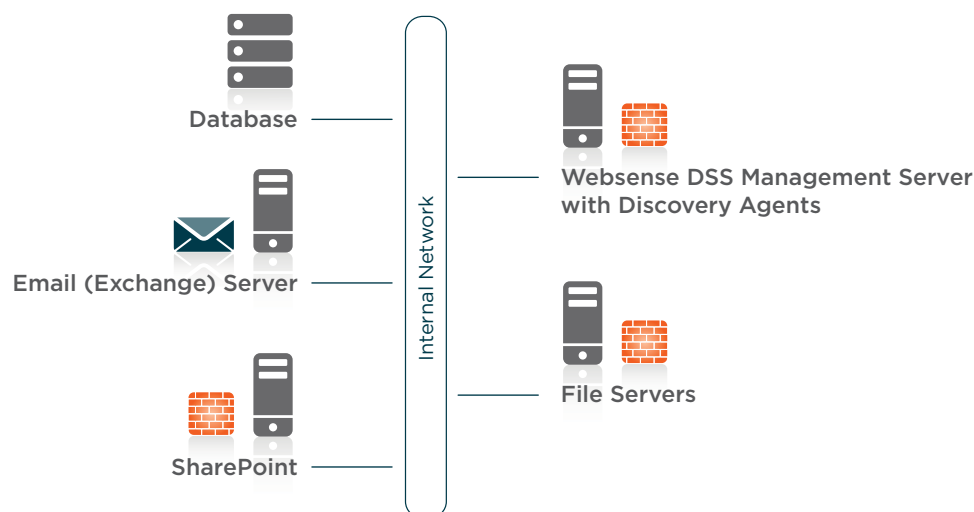
Ireland
websense.co.uk

Taiwan
websense.cn

Israel
websense.co.uk

UAE
websense.com

Features	Benefits
Discovery and classification of confidential data in data repositories on network	<ul style="list-style-type: none"> • Comprehensive Discovery: Remotely scan data repositories including databases, file shares, Exchange (email server), SharePoint (document management), desktops • Coverage: Over 400 file types, including Microsoft Exchange PSTs, fingerprints of business data and regulatory templates to accurately detect confidential data
Built-in data identification with patented Precise ID™ technology	<ul style="list-style-type: none"> • Automated, accurate identification of sensitive data: Keywords, patterns, file types, dictionaries, fingerprinting of files (unstructured data) and database records (structured data), regular expressions, thresholds, context, proximity, correlation and combinations between database fields • Effective detection: Reduce false positives by disregarding data if not mapped to customer data or if below specified threshold
Automated remediation options	<ul style="list-style-type: none"> • Reduce risk of data loss with options for user notification, user confirmation, audit and log, removal or replacement (using credentials and automated scripts), change file permissions, and more • Reduce violations by 50 percent with user notification of policy violations
Flexible deployment options	<ul style="list-style-type: none"> • Efficiency: Schedule during off-peak hours to minimise impact • Flexibility with scan options including agent-less scanning and exception lists for network IP range for phased, selected discovery
Comprehensive and current policy templates, centralised policy and incident management and reporting	<ul style="list-style-type: none"> • Built-in wizards to make it easy: templates for industry, regional regulations (e.g. PCI, UK DPA, GLBA, HIPAA, SOX, etc.); pre-defined checks for PII, PHI, PCI and PFI • Apply consistent policies across all data repositories • We keep track of regulations, so you don't have to • Built-in reports for auditors and executives • Integrated Discovery Reporting: Includes managed scans using data from Websense Data Endpoint



Optimal deployment for Data Discover

For more information, to start a free trial of Websense Web solutions, or to view an online demo, visit www.websense.com/evaluations.